

反帝無不行

革命成功去天死

光





**MINI
SQUARE**



**GREAT, EFFICIENT
LIGHT**



**PATENT PENDING
INSTALLATION
SYSTEM**



ADJUSTABLE



**GOLD
WARM DIM**



TRIMLESS



**INFINITE
EXPRESSIONS**



QBINI

- **Design**
 - In cooperation with **Florent Coirier**
 - Trimless integration of Qbini lamp units
 - Square, seamless design

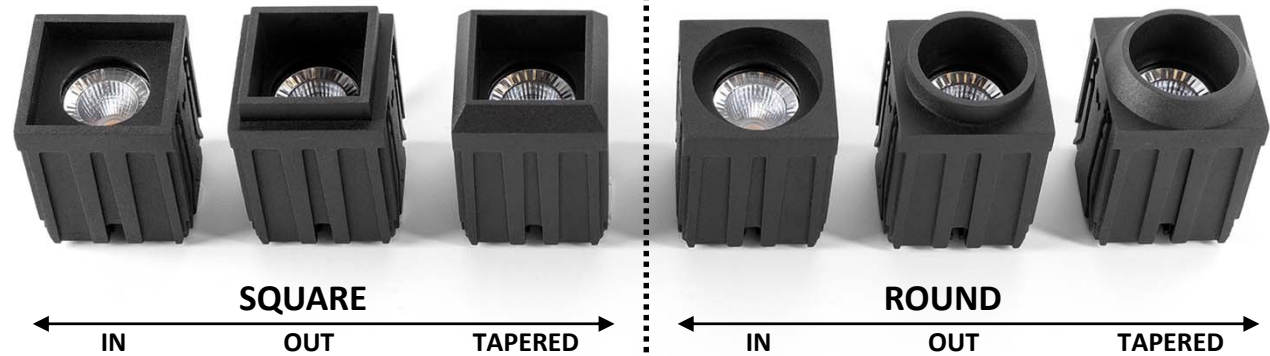


QBINI

- Light sources

Fixed lightsource

- 6 shapes
- PMMA incl.



Adjustable lightsource

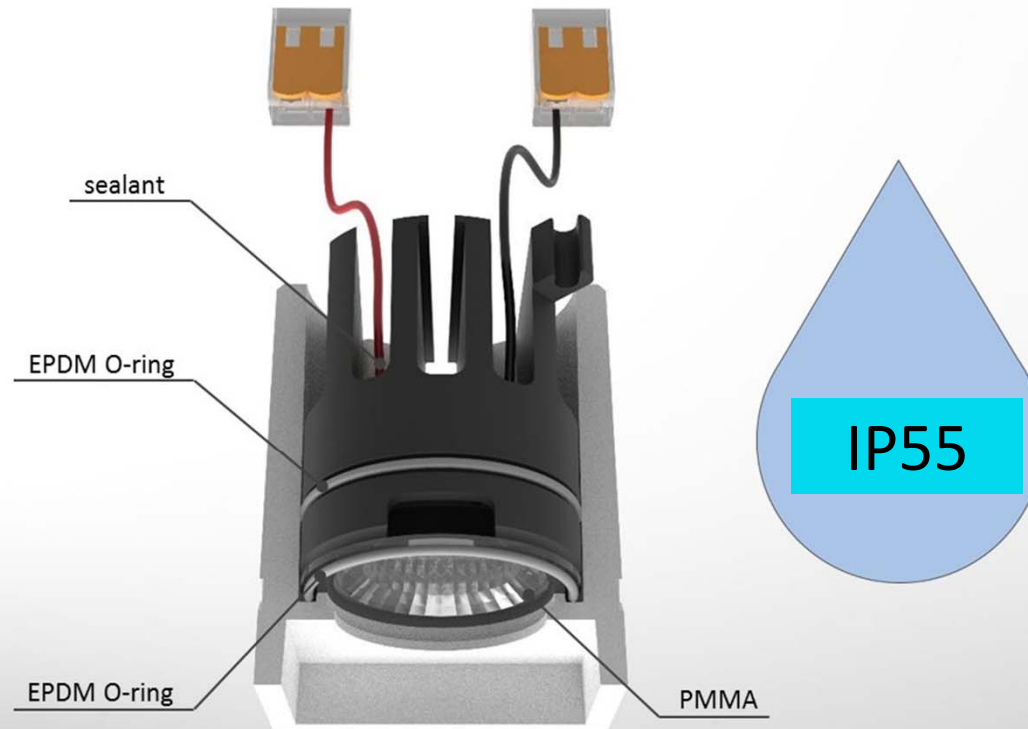
- 1 shape
- PMMA incl.
- IP20



Qbini

—

- **Suitable within humid environments**
 - IP55 (back & front)



Qbini adjustable

—

- **Qbini adjustable**
 - “Cube” + “mini”
 - “Adjustable”:
 - Rotation 360°
 - Inclination 30°
- **Design**
 - In cooperation with Florent Coirier



QBINI

- 2 types of installation



**QBINI FRAME
WITH A TRIM**

Aluminum frame
9.5mm border



**QBINI TRIMLESS FRAME
TRIMLESS**

Plastic frame
No border

QBINI

- Overview frames: from 1 to 4 lamps



1L QBINI FRAME



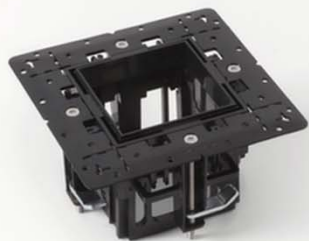
2L QBINI FRAME



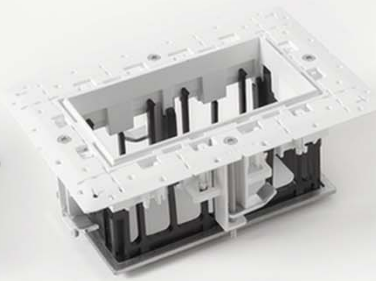
3L QBINI FRAME



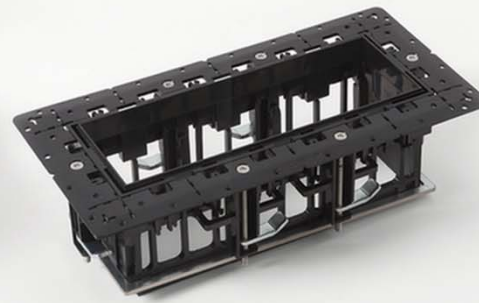
4L QBINI FRAME



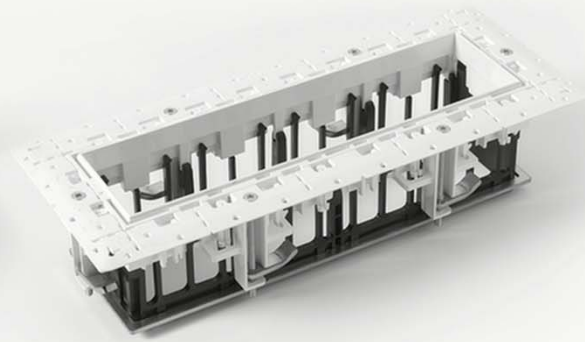
1L QBINI TRIMLESS FRAME



2L QBINI TRIMLESS FRAME



3L QBINI TRIMLESS FRAME



4L QBINI TRIMLESS FRAME



QBINI

- 2 types of installation



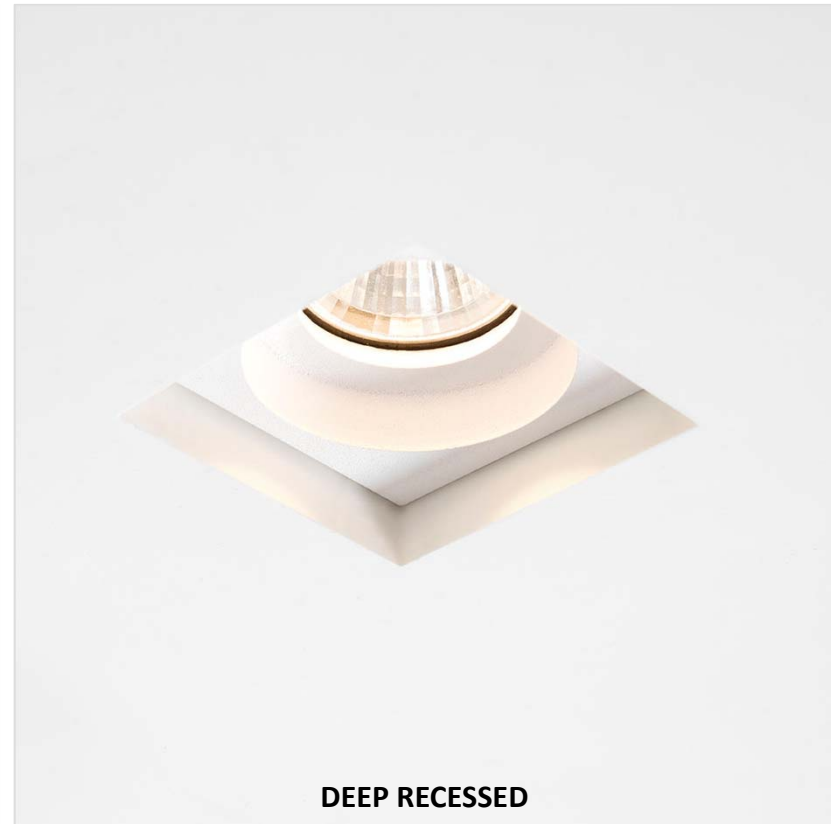
QBINI FRAME
WITH A TRIM



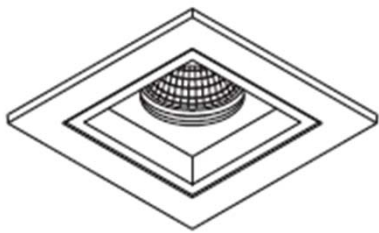
QBINI TRIMLESS FRAME
TRIMLESS

QBINI

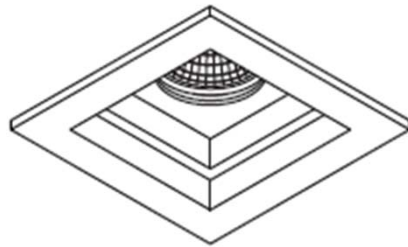
- Dual positioning



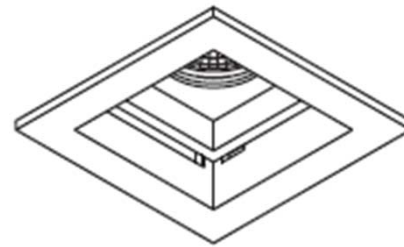
QBINI



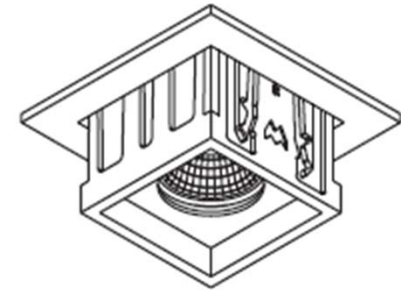
First push
=
First position



Second push
=
Second position
=
deep recessed



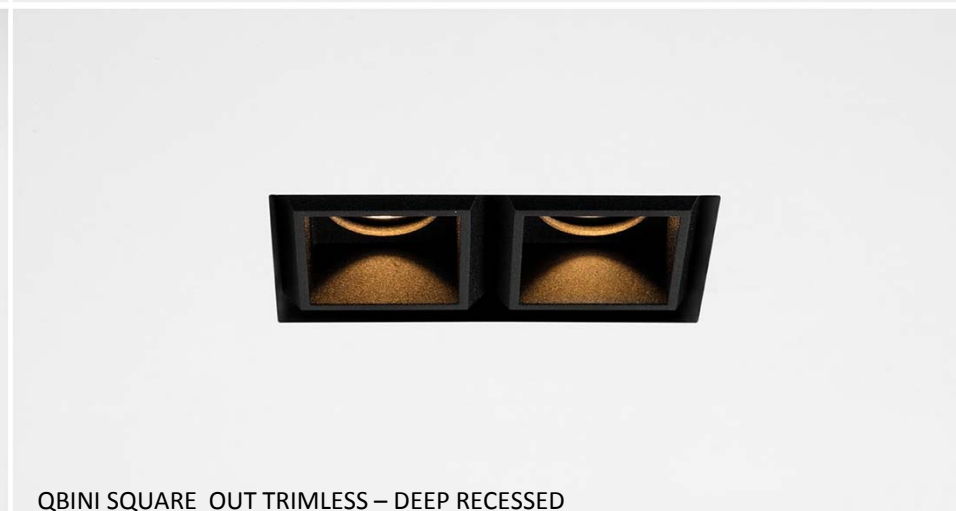
Third push
=
release position



Pull
=
remove



Qbini trimless



Qbini trimless

- Create your own patterns



Ingenious installation
at a click

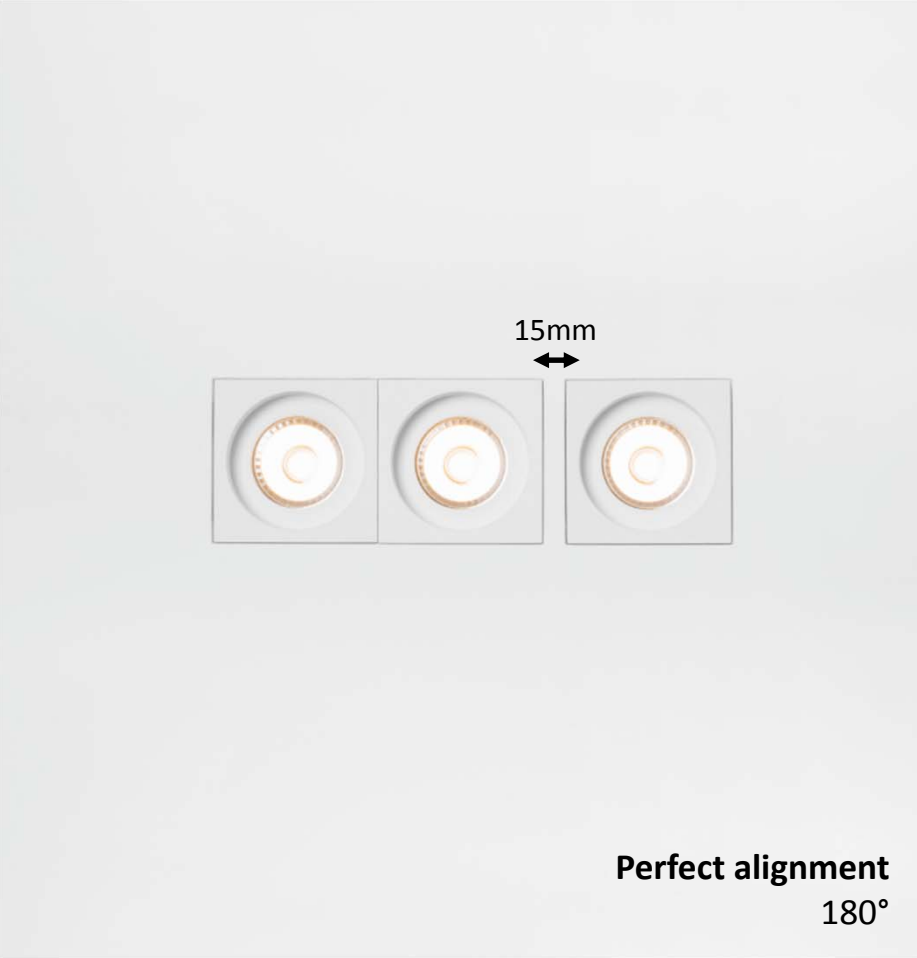
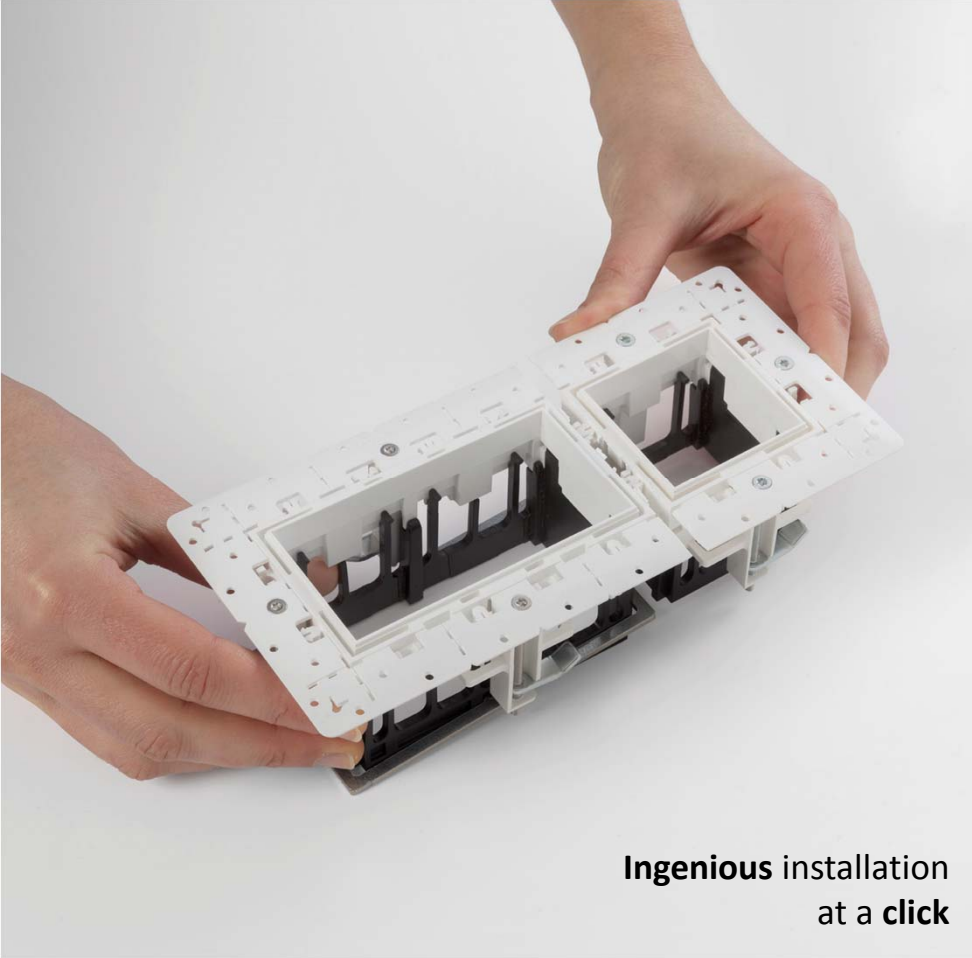


Perfect alignment
90°



Qbini trimless

- Create your own patterns

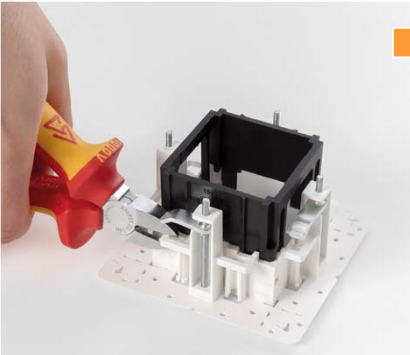


Qbini trimless

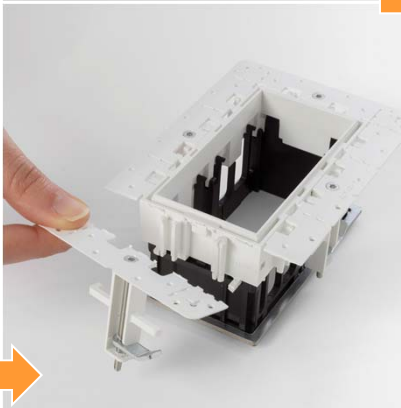
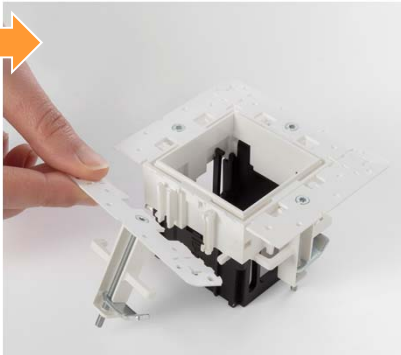
- Create your own patterns



Select the frames that you want to connect to each other.



Cut the marked attachment at the right and left side.



Fold the flange on the provided lines and break it off.

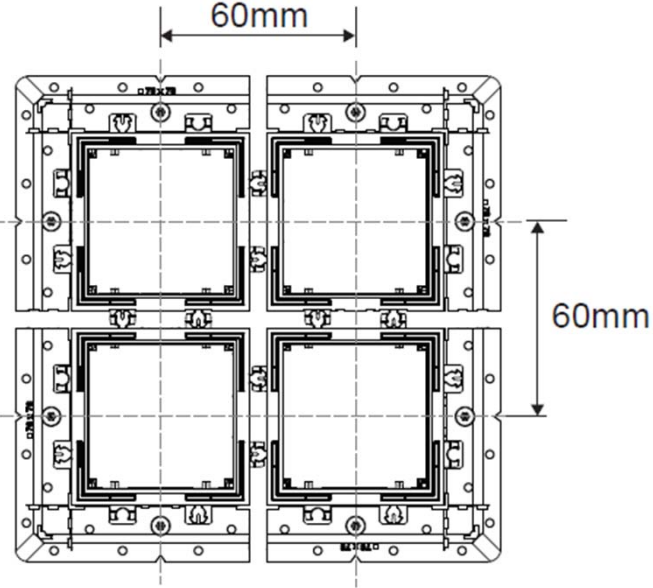
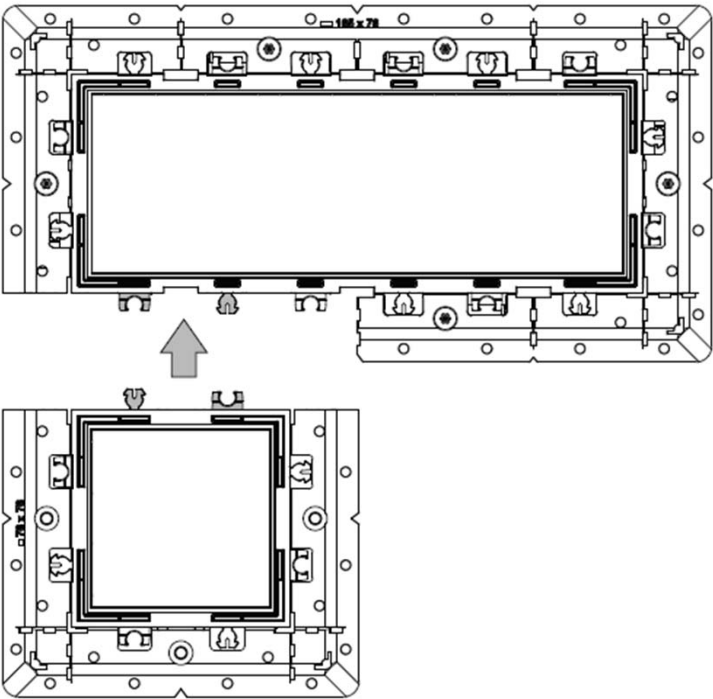


Click the frames into each other.



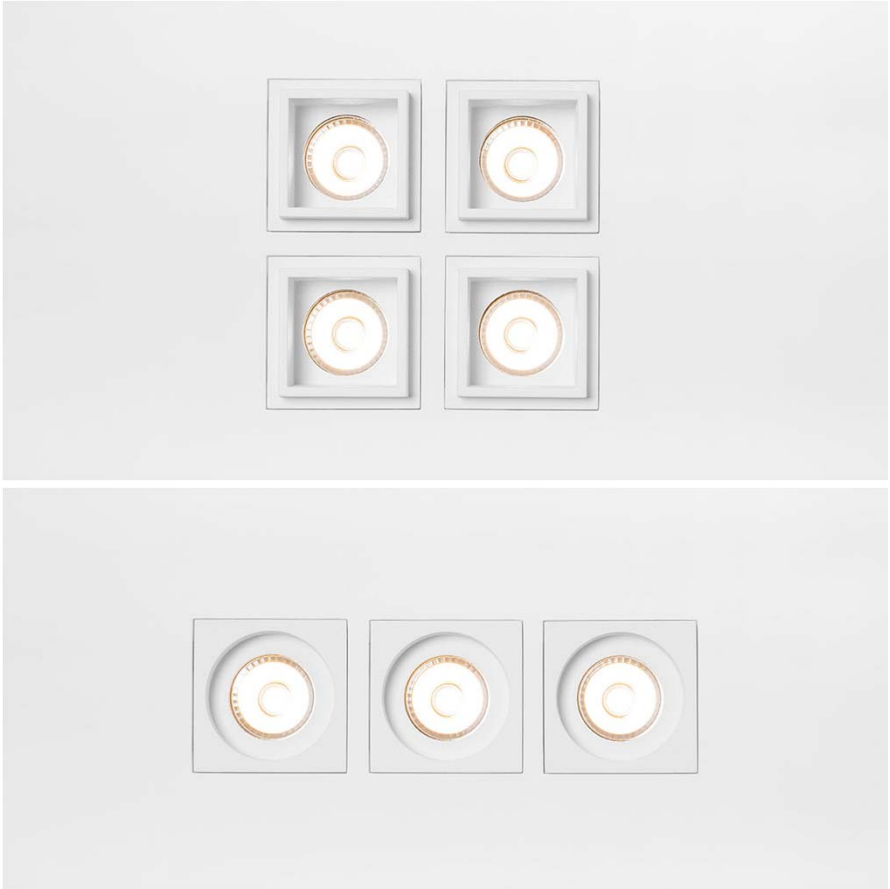
Qbini trimless

- Create your own patterns



Qbini trimless

- Create your own patterns



QBINI

- 3 colors

- **Qbini (adjustable)**

- Black structure
- White structure
- **Gold**



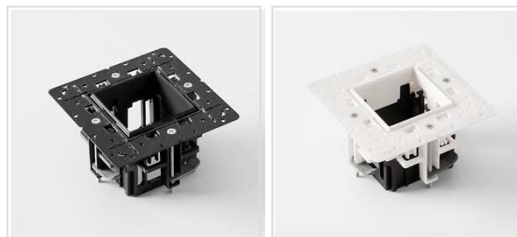
- **Qbini frame**

- Black structure
- White structure
- **Gold**



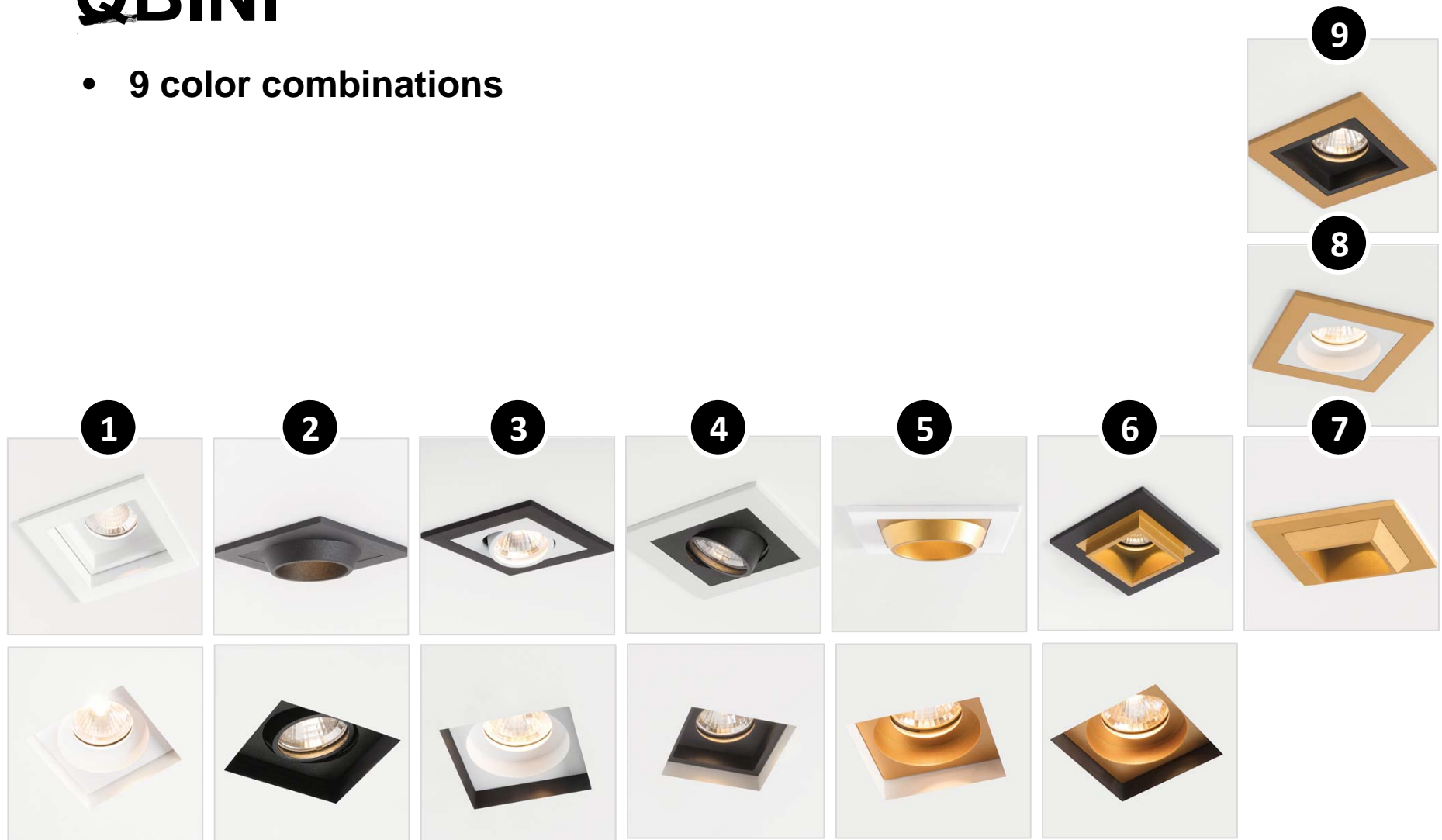
- **Qbini trimless frame**

- Black
- White

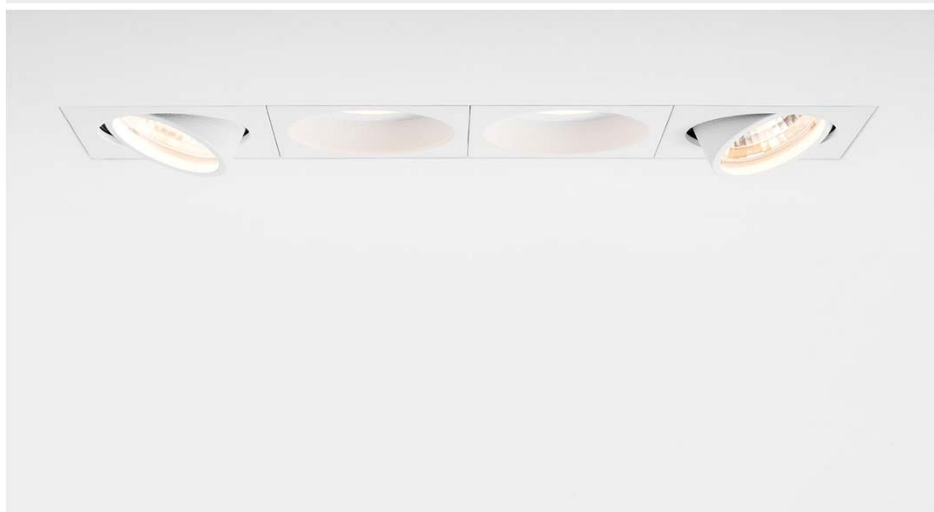
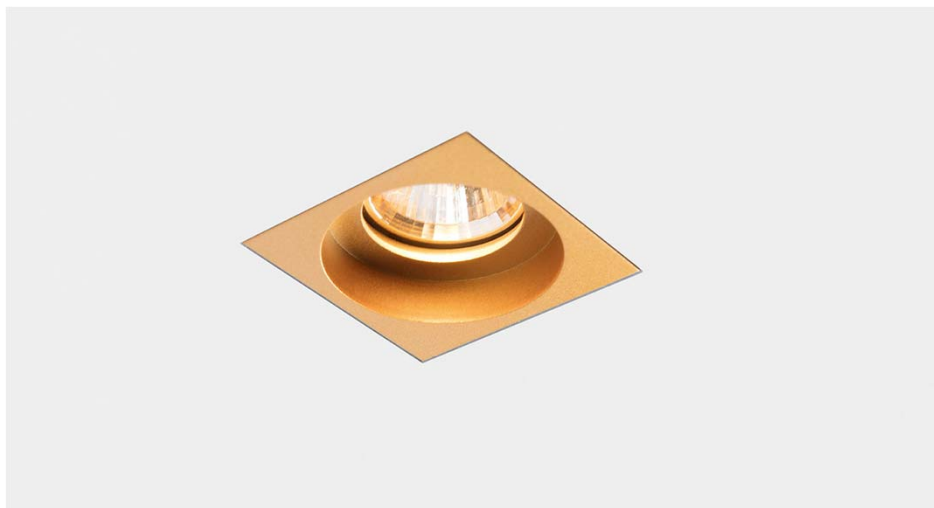


QBINI

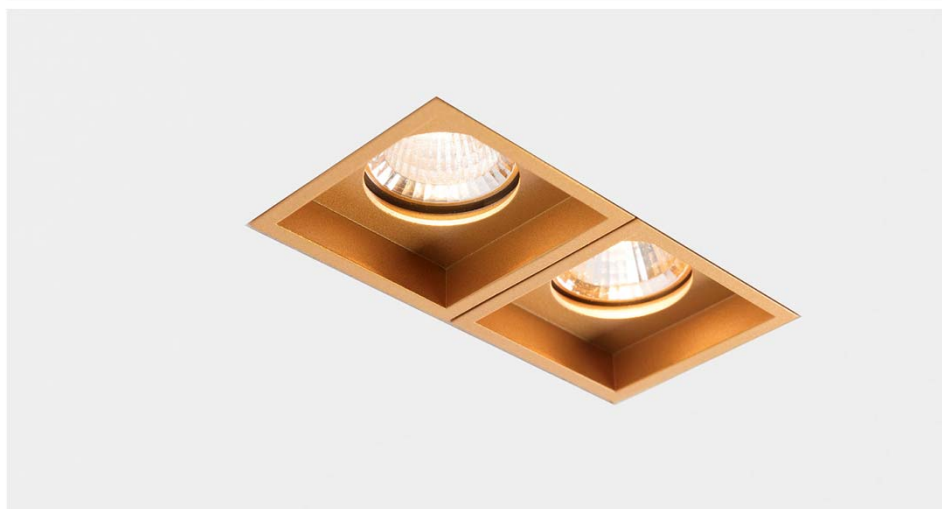
- 9 color combinations



Qbini trimless



Qbini trimless

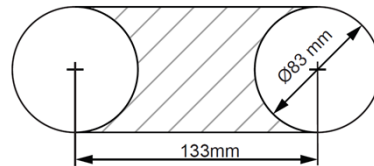
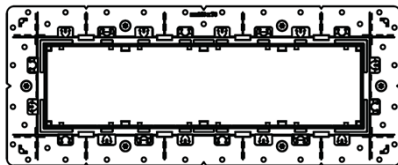
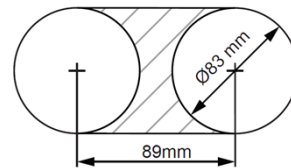
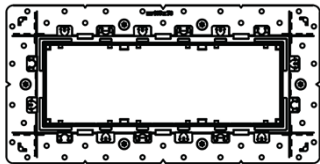
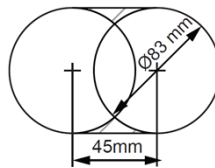
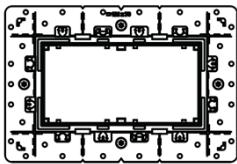
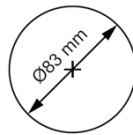
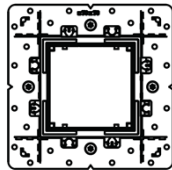


Qbini trimless

- **Mounting**

- You only need a hole saw in **1 size!**

1



Ø 83mm

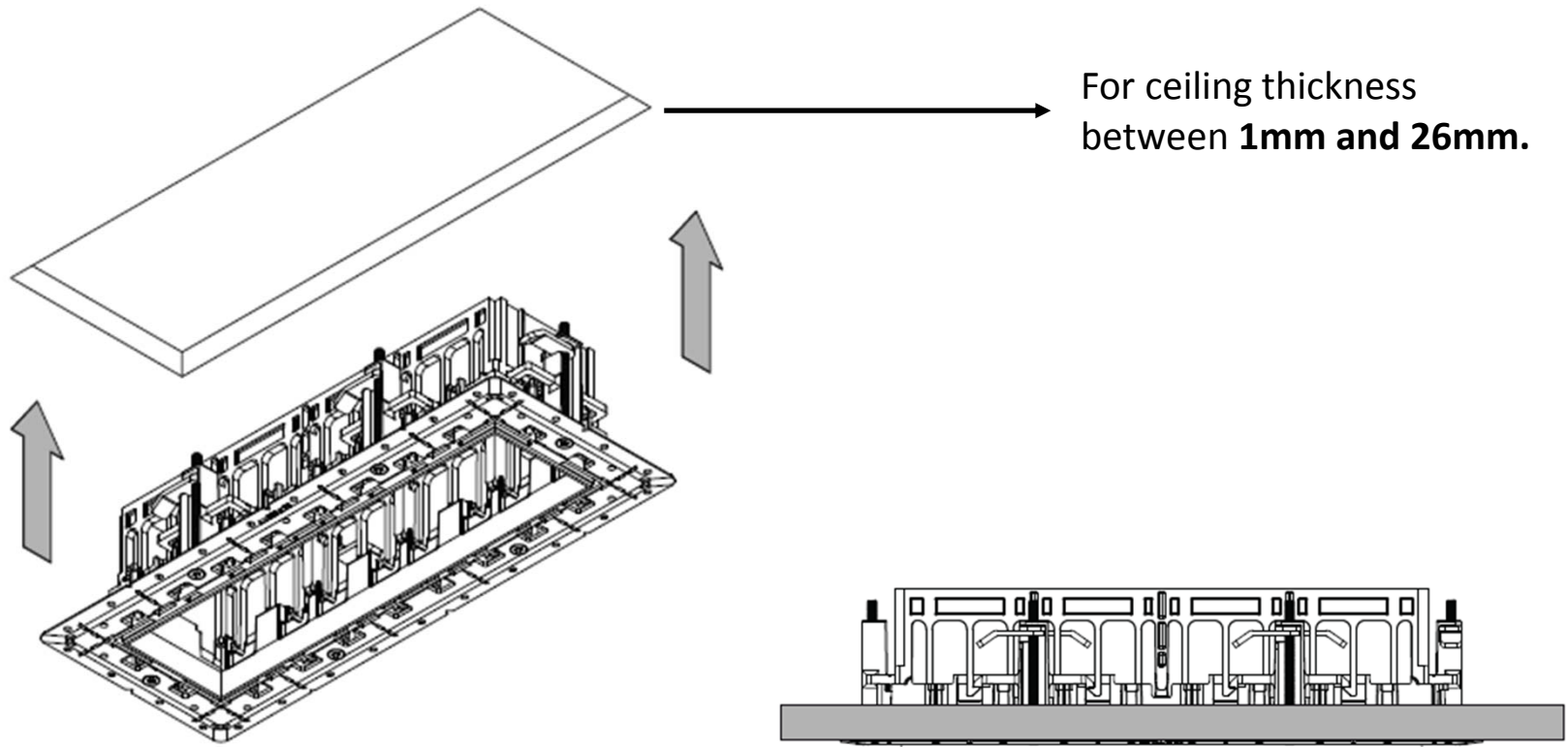


Qbini trimless

- **Mounting**

- Push outer border of the recessed frame flat against the ceiling.

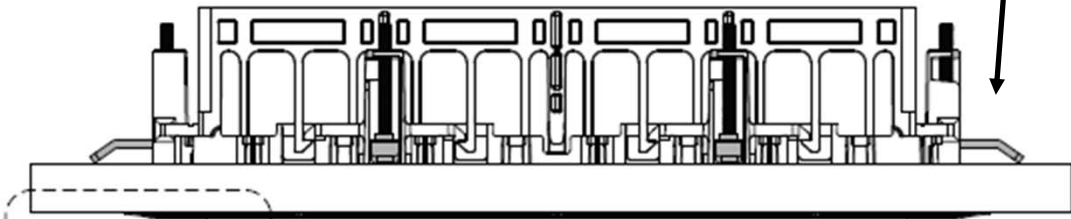
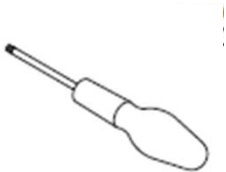
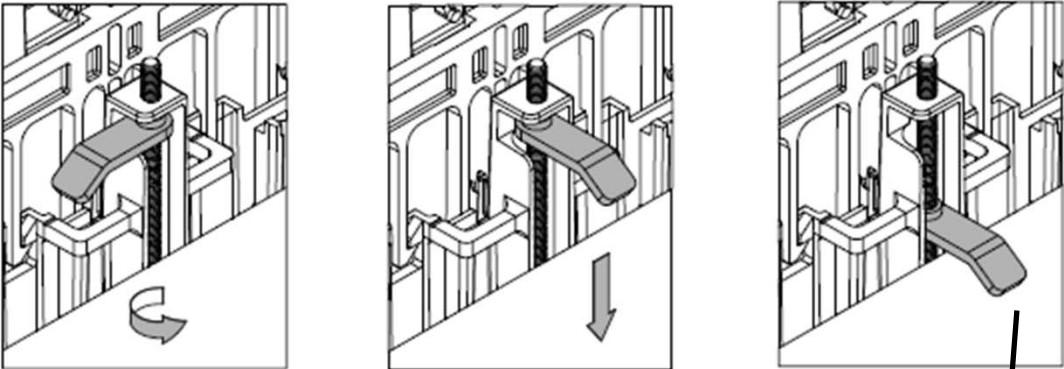
2



Qbini trimless

- Mounting

3

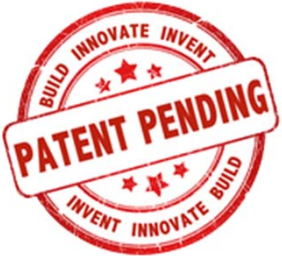


Minimum filling distance 180mm

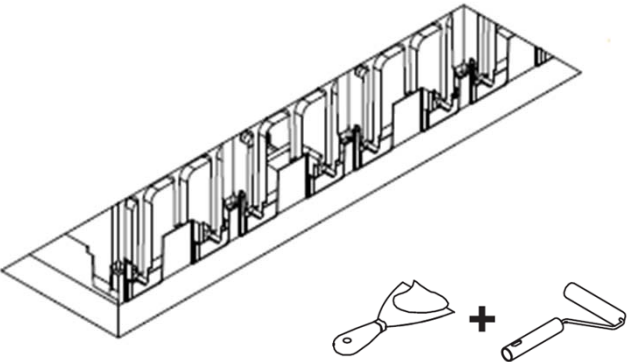


Qbini trimless

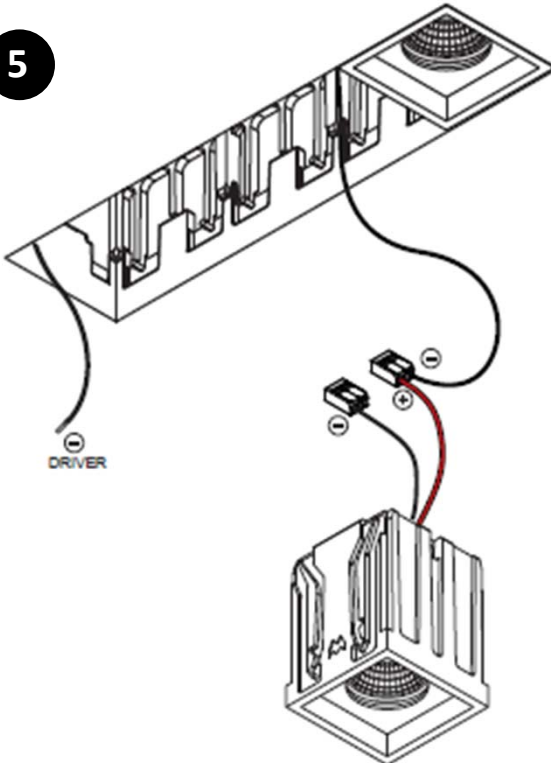
- Mounting



4



5



Qbini

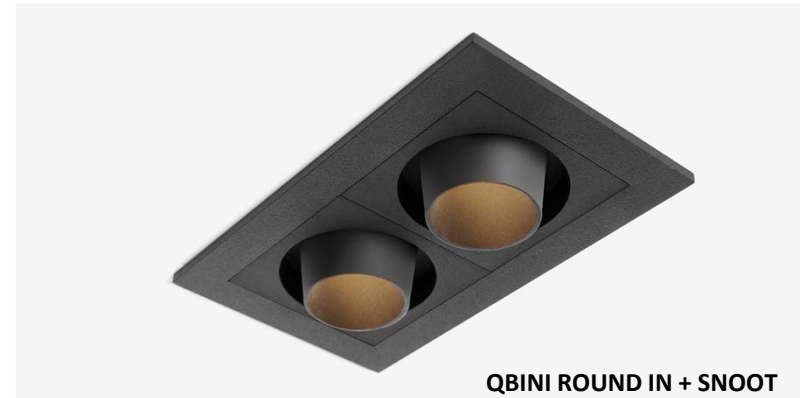
—

- **Lighting accessories**

- Snoot
- Honeycomb
- Crossblade



- No tools needed, just clicking on the front side.



QBINI ROUND IN + SNOOT



QBINI ROUND IN + HONEYCOMB



QBINI SQUARE IN + CROSSBLADE



Qbini blind cover

- **Design**
 - Square, seamless design
 - Plain cover
 - 3 colors



Qbini blind cover

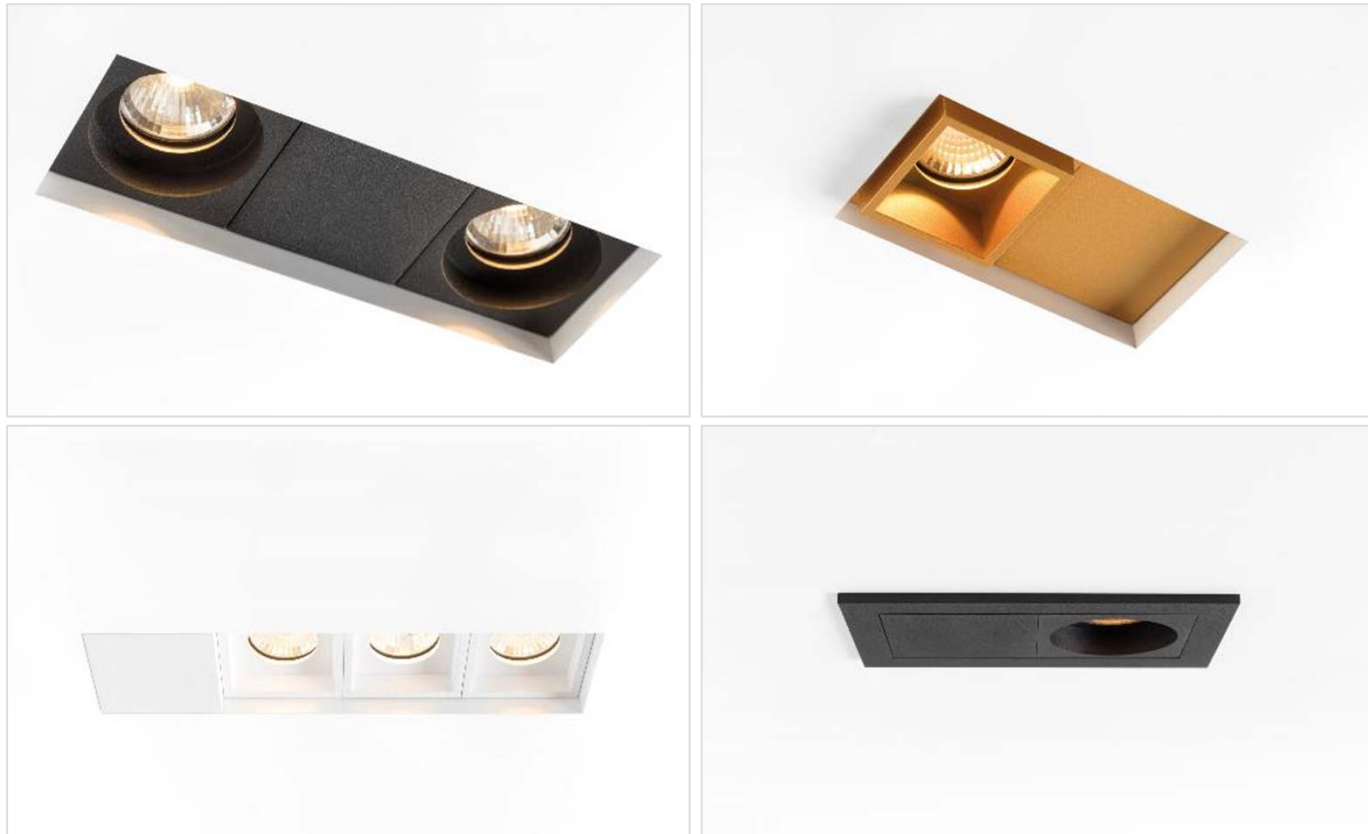
- No ordinary coverplate...
 - “Blind” Qbini unit
 - Same flexibility as Qbini light units
 - Fits in **trimless & non trimless** frames
 - **Dual positioning**



Qbini blind cover

- Why use a blind cover?

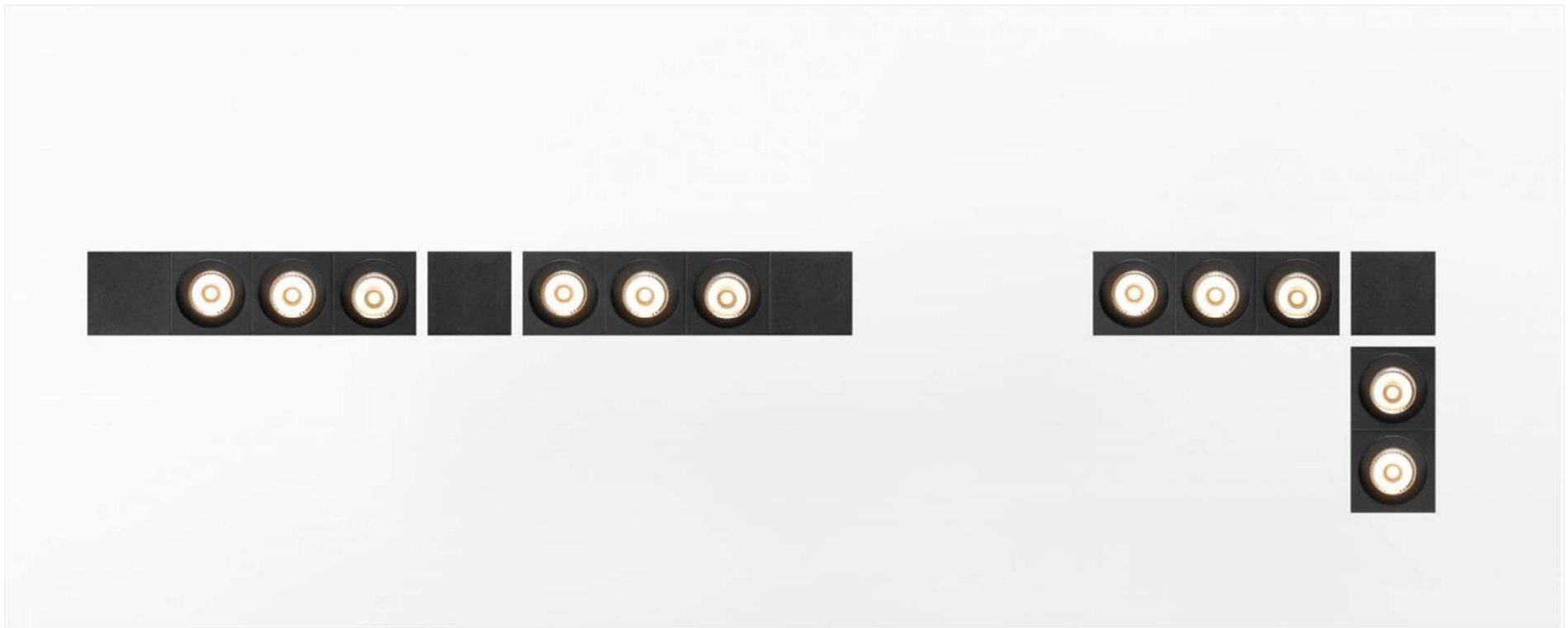
1.a Aesthetic reason – different look/design



Qbini blind cover

- When use a blind cover?

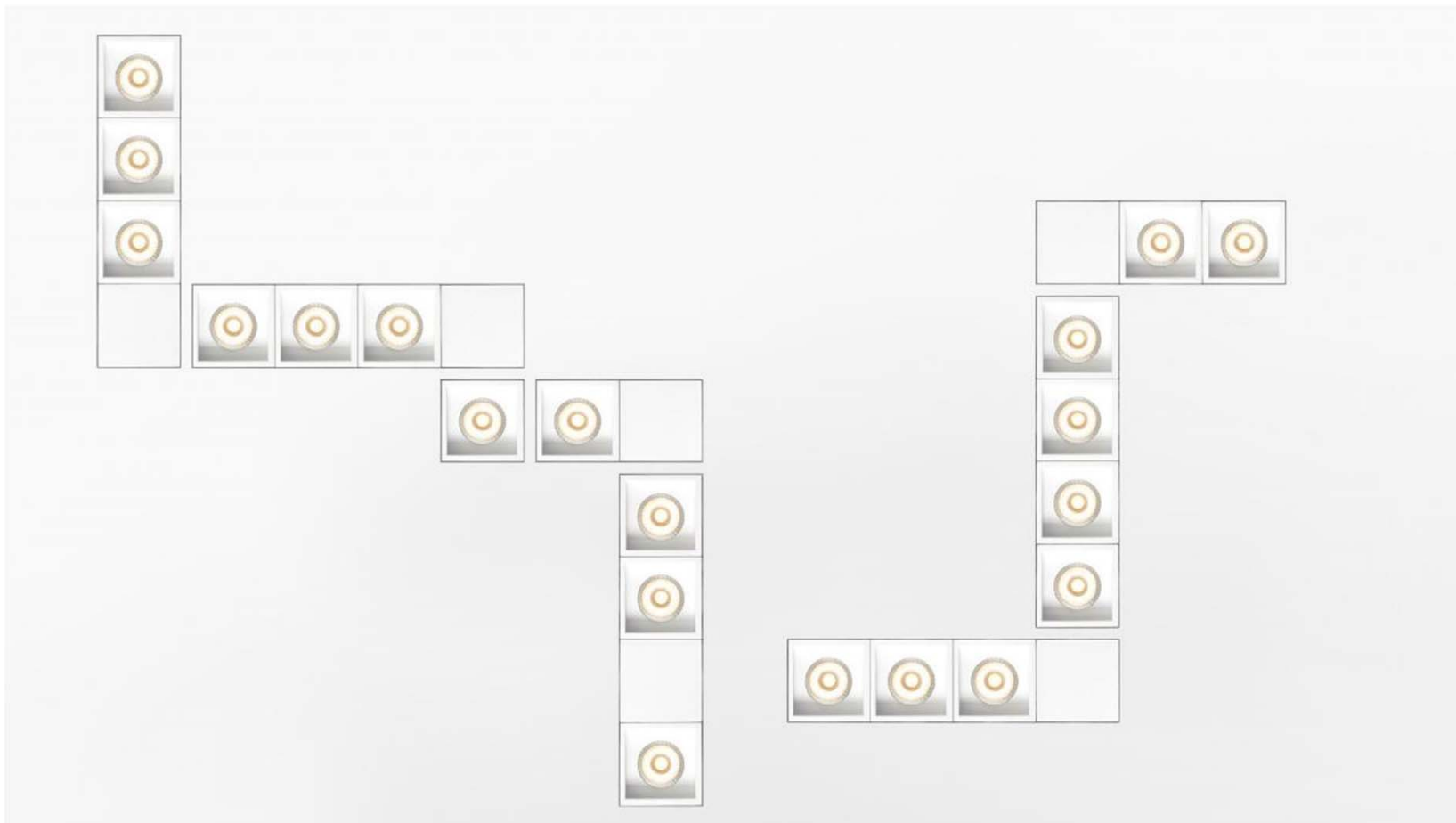
1.b Aesthetic reason - create patterns without too much light.



Qbini blind cover

- When use a blind cover?

1.b Aesthetic reason - create patterns without too much light.



Qbini blind cover

- When use a blind cover?

2. Practical / technical reason

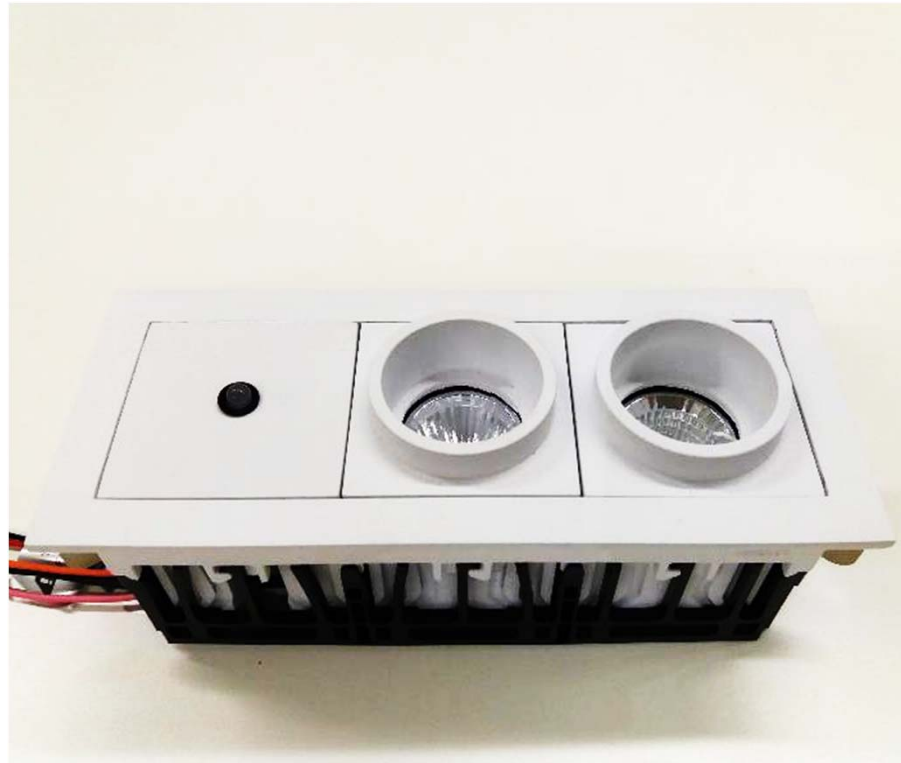
- When desired LED gear does not fit through cut-out hole of fixture.
Solution: Larger Qbini frame combined with blind cover



Qbini blind cover

- When use a blind cover?

3. Grateful cover to integrate sensors, signalisation, back-up unit,

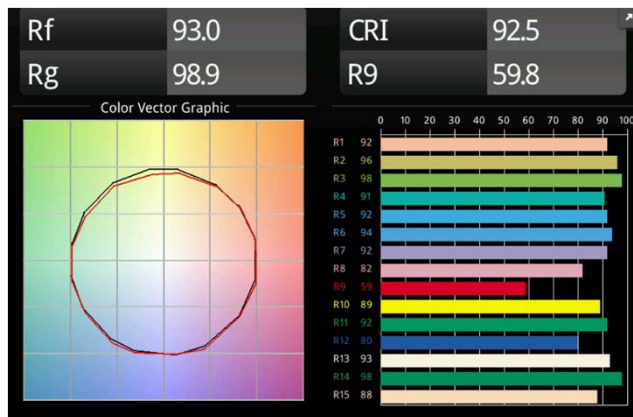


QBINI



- **Fotometric data**

- LED - GE
 - 3000K (25°) - 500mA - 4.3W - **433lm**
- **100lm/W**
- 2700K/3000K/4000K
- Medium 25° or flood 40°
- CRI90+
- Dimmable



QBINI ADJ/ROUND IN TRIMLESS

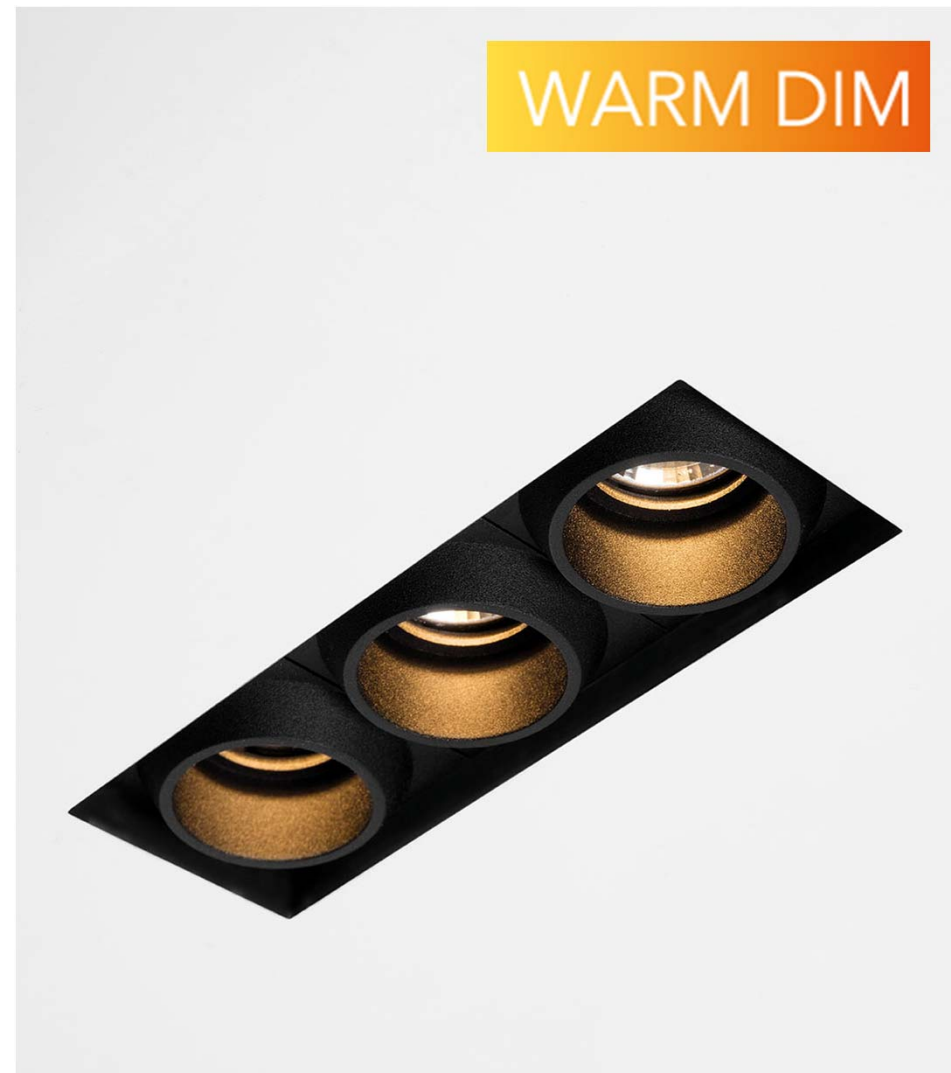
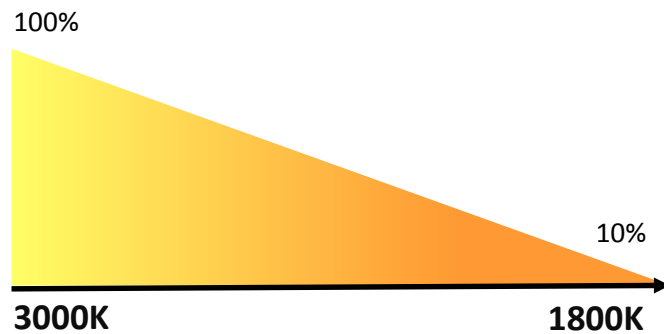


QBINI SQUARE OUT TRIMLESS



QBINI

- **Warm dim technology**
 - LED - GE
 - 3000K (25°) - 250mA - 4W - **304lm**
 - **76lm/W**
 - 1800K (10%) – 3000K (100%)
 - Medium 25° or flood 40°
 - CRI90+



6 fixed shapes / 1 adjustable shape

4 frames / 4 trimless frames /

2 positions / 3 colors /

3 color temperatures / 2 beam angles /

3 lighting accessories



> 6 trillion

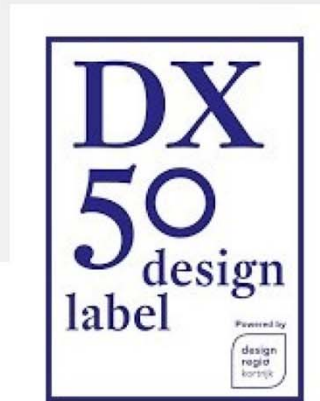
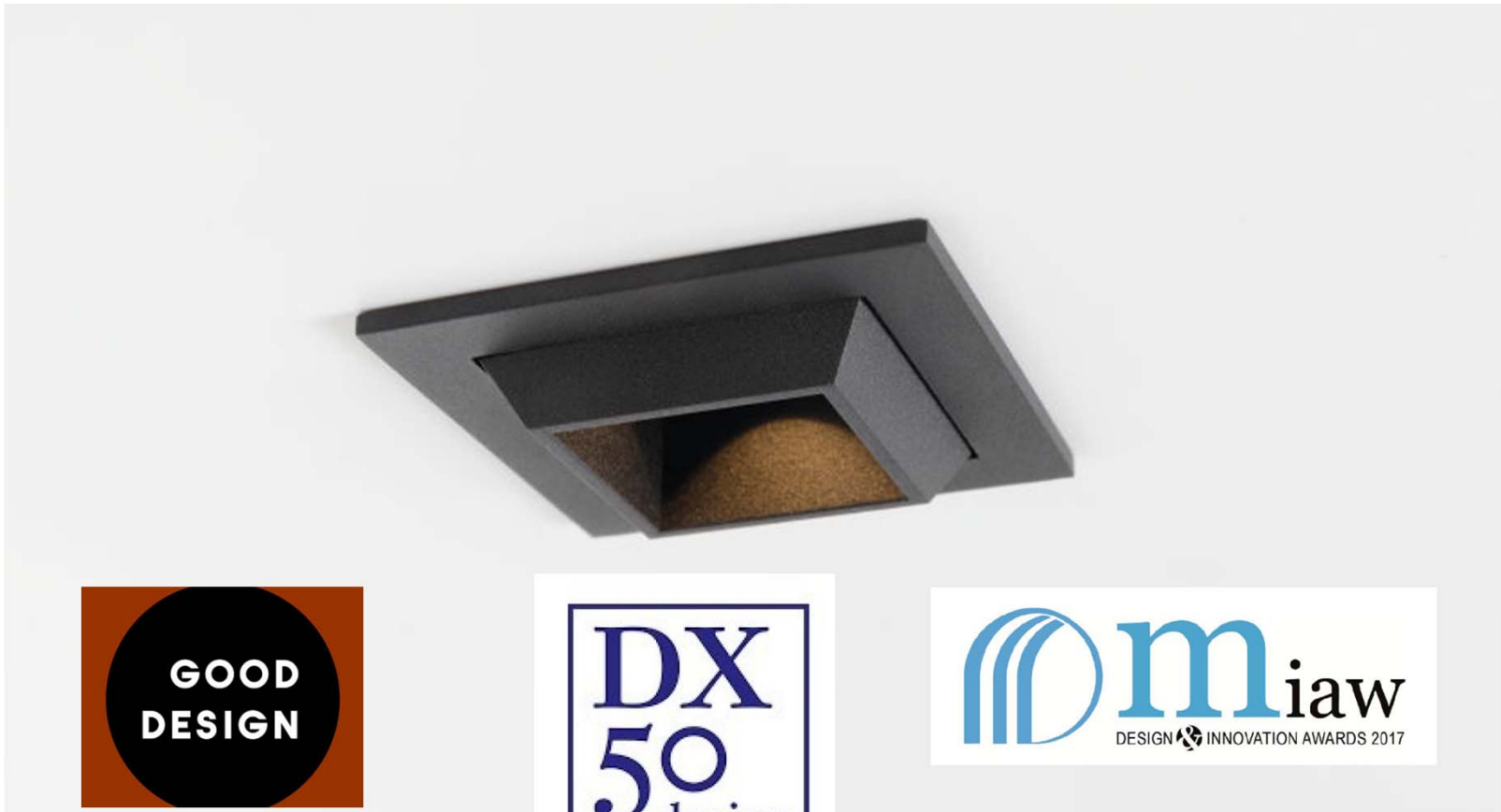
COMBINATIONS





Design

QBINI



QBINI

- **Segmentation**
 - High end residential
 - Small hospitality venues
 - Offices
 - Boutiques





QBINI ROUND IN



QBINI SQUARE OUT



